

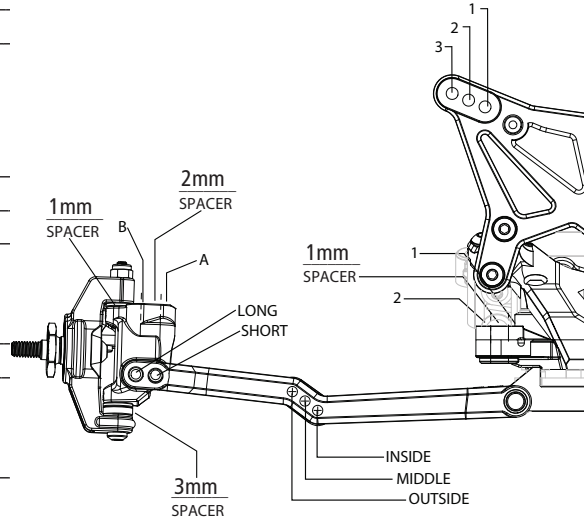
Name: Kit Setup Date: _____ Event: _____

City: _____ State: _____ Track: _____

Track Conditions: Indoor Tight Smooth Hard Packed Blue Groove Wet Grass Low Bite High Bite
 Outdoor Open Rough Loose/Loamy Dry Dusty Astro Turf Med Bite Other _____

Front Suspension

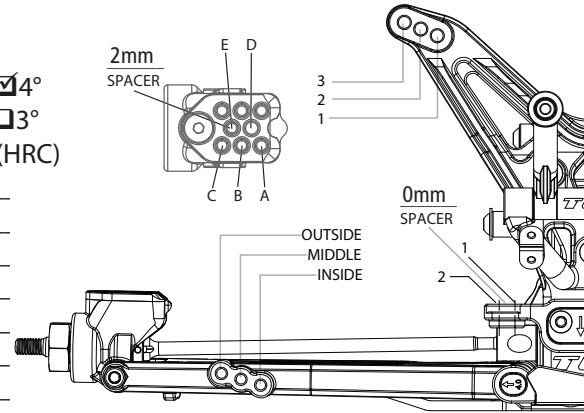
Toe: 0 degree
 Ride Height: 30mm Camber: -1 degree
 Caster: 0° 5°
 Kick Angle: 20° 25° 30°
 VLA Setting: Short Arm Long Arm
 Oil: 32.5wt.
 Piston: 2 x 1.6mm (TLR233009)
 Spring: Standard Low Freq. Color: Black, 22T
 Front Pivot: Aluminum Plastic HRC
 Kick Shim: Brass Plastic
 Shock Limiters: None Stroke: 31mm
 Shock Location: 2-Outside
 Steering Type: Slide Rack Bell Cranks
 Spindle Ball Stud: Standard Low Mount
 Bumper Steer Spacers: 1mm
 Ackerman Ball Stud: Standard Low Mount
 Ackerman Spacers: 1mm
 Ackerman Arm: #1 #2 #3 _____
 Trail: 2mm 3mm 4mm
 Camber Link: 2-B



Notes: _____

Rear Suspension

Transmission Type: 3-Gear 4-Gear
 Toe Inserts: 0.5° 1° 1.5° 2° 2.5° 3° 3.5° 4°
 Anti-Squat Inserts: 0° 0.5° 1° 1.5° 2° 2.5° 3°
 Roll Center: Low Roll Center (LRC) High Roll Center (HRC)
 Ride Height: 29mm Camber: -1.5 degrees
 Rear Hub Spacing: Middle (2mm front, 2mm rear)
 Hex Width: Standard 22
 Sway Bar: None
 Oil: 32.5wt.
 Piston: 2 x 1.6mm (TLR233009)
 Spring: Standard Low Freq. Color: Pink
 Shock Limiters: 7mm Stroke: _____
 Shock Location: 3-Middle
 Inner Link Spacer: -1mm 0mm +1mm
 Camber Link: 1-E
 Body: TLR 22SCT 2.0
 Battery Position: _____
 Diff Type: Ball Gear Setting: Tight



Electronics

Timing Advance: _____
 Radio: _____ Throttle/Brake Expo: _____
 Servo: _____ Servo Expo: _____
 ESC: _____ Throttle/Brake EPA: _____
 Initial Brake: _____ Motor: _____
 Drag Brake: _____ Pinion: _____ Spur: 84T
 Throttle Profile: _____ Battery: _____

Weight Placement
 (Mark with "X")

Weight of each piece _____ oz./g

Tires:	Compound	Insert	Additive
Front: _____	_____	_____	_____
Rear: _____	_____	_____	_____
Notes: _____	_____	_____	_____